

Gru Fassi 820 Iveco X-Way 570

Utile per l'elevazione di carichi fino a 32 metri di altezza.

Caratteristiche:

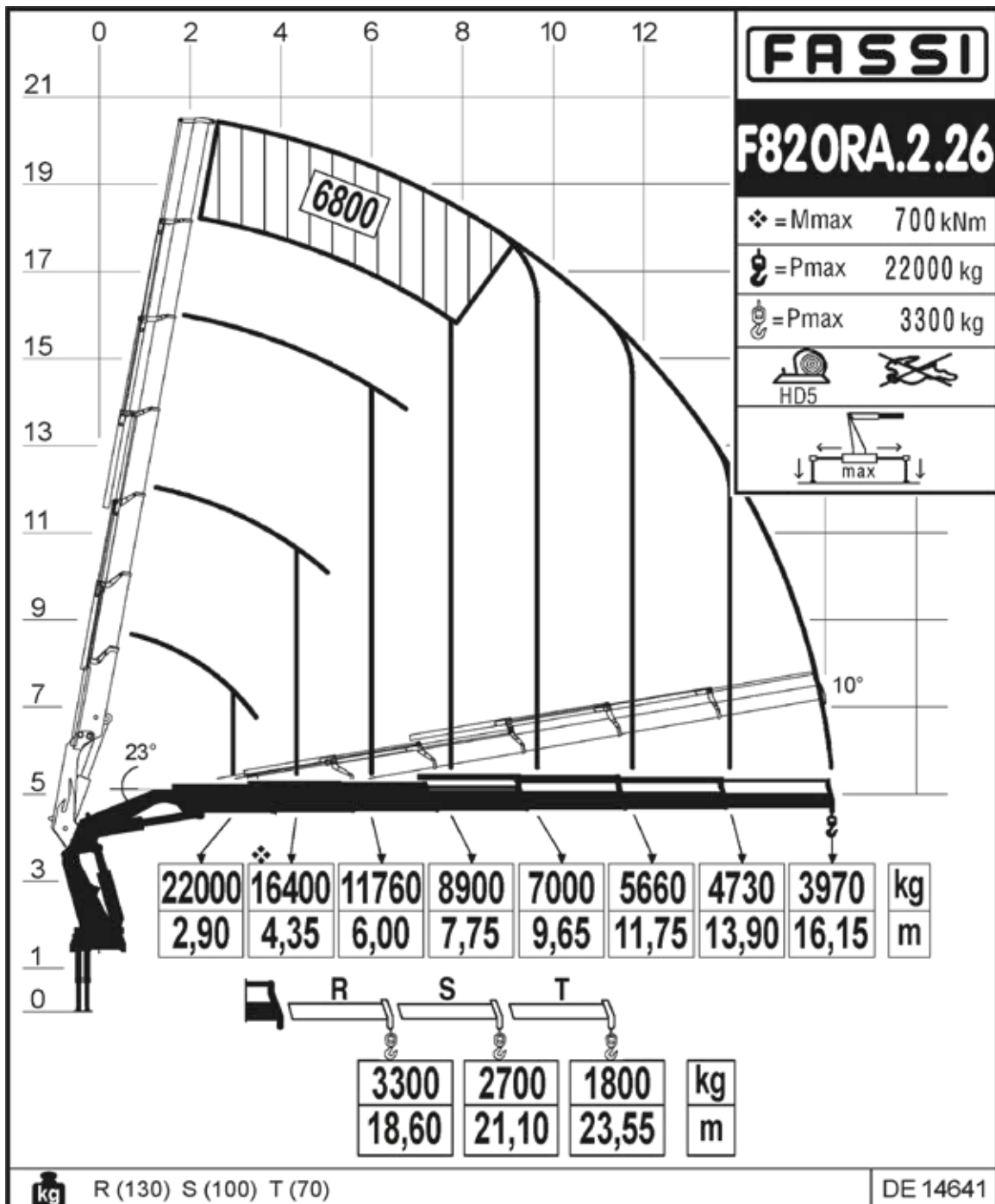
- Dimensioni: 10200 x 2500, H 3980

- Motore Diesel

- Argano / Verricello

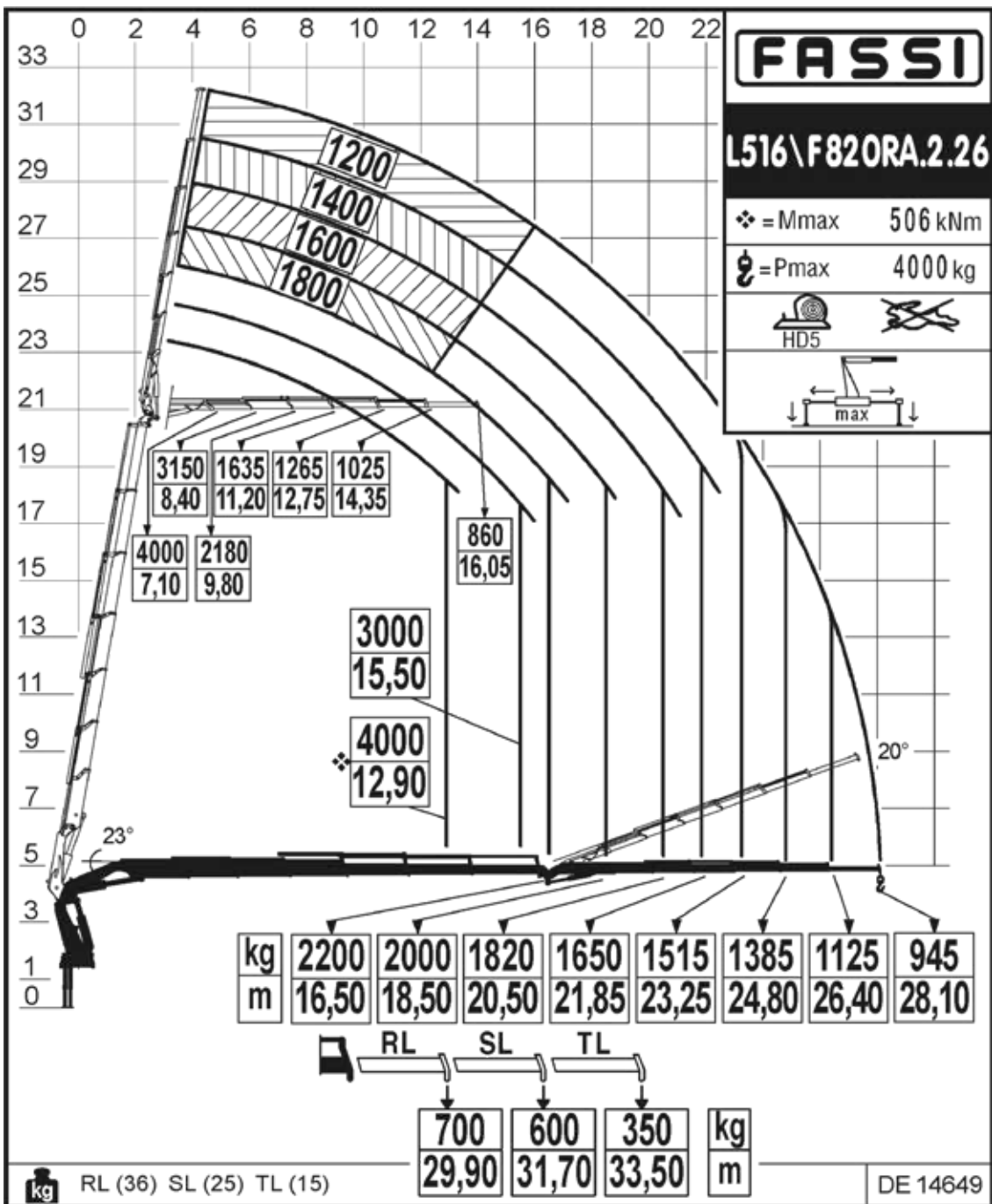


6s



Gru Fassi 820 Iveco X-Way 570

6s +6s Jib



Gru Fassi 820 Iveco X-Way 570

6s +6s Jib -verricello

