

Gru Fassi 345 Iveco X-Way 420

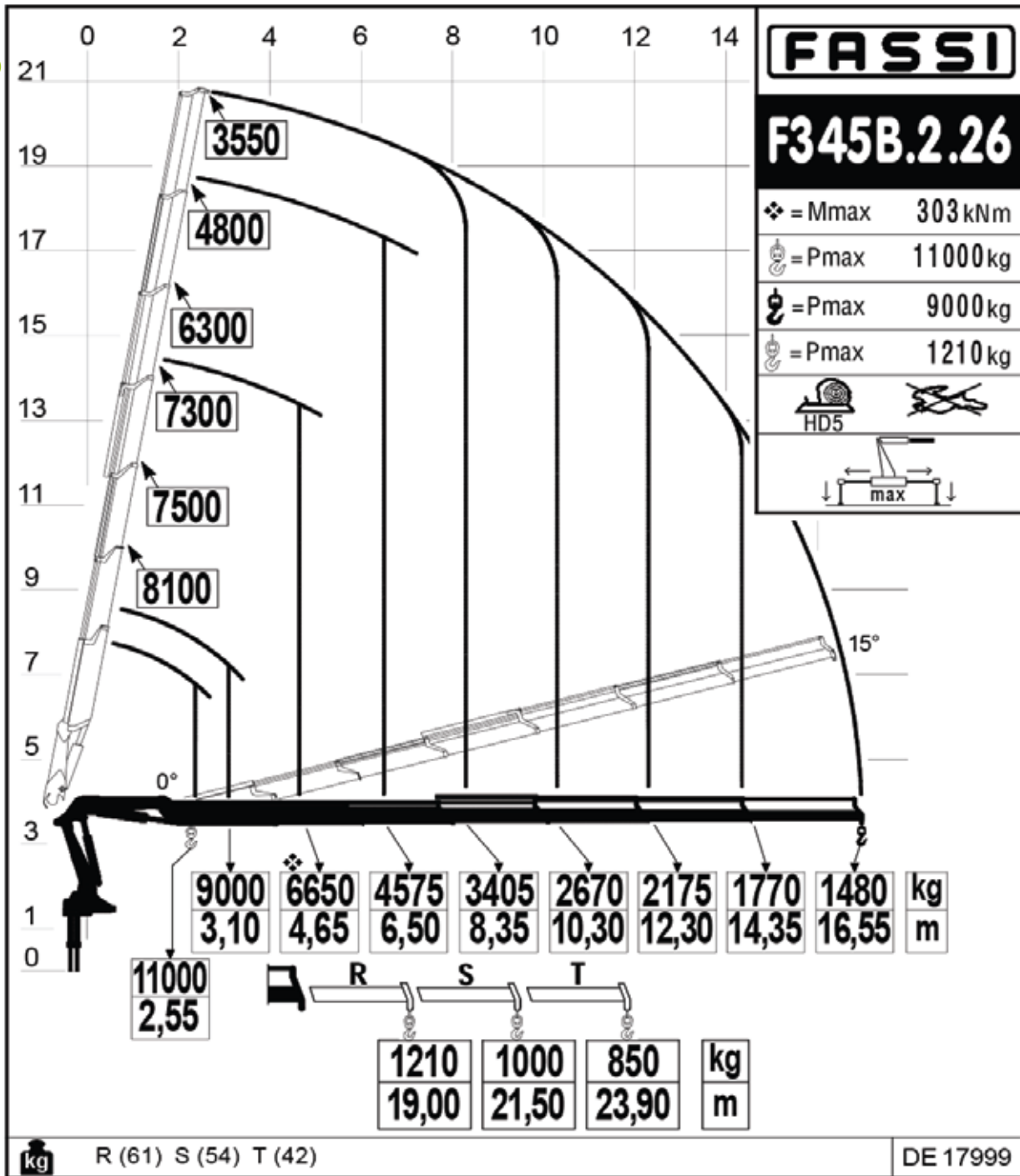
Utile per l'elevazione di carichi fino a 30 metri di altezza

Caratteristiche:

- Dimensioni: 8000 x 2550 H 3980
- Motore Diesel
- Argano / Verricello

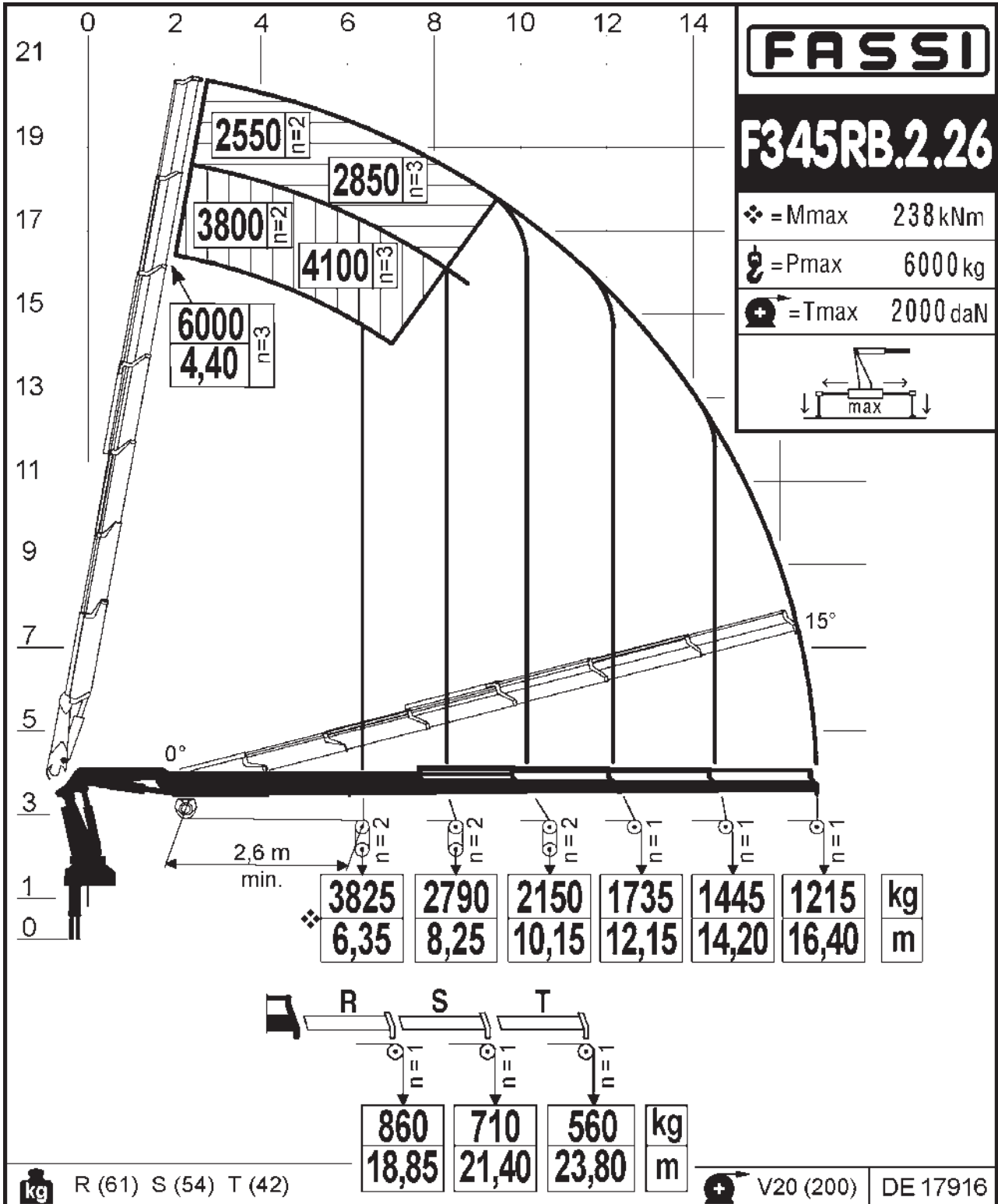


6s



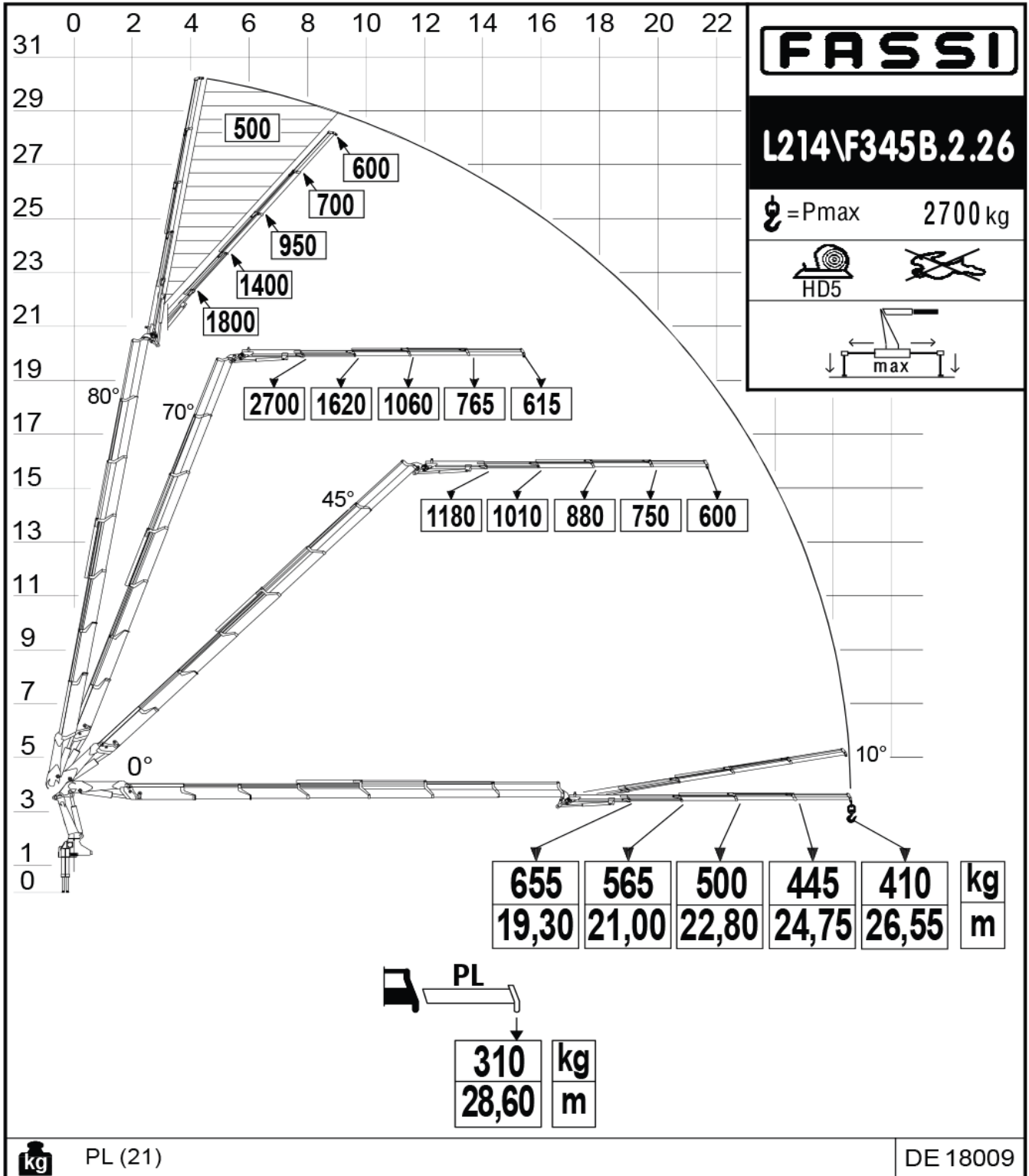
Gru Fassi 345 Iveco X-Way 420

6s - verricello



Gru Fassi 345 Iveco X-Way 420

6s +4s Jib



Gru Fassi 345 Iveco X-Way 420

6s +4s Jib -verricello

